

RECEIVED
LARAMIE COUNTY
CHEYENNE, WY.

N.W. CORNER Sec. 7 T18N R66W

CERTIFIED LAND CORNER RECORDATION

OCT 5 PM 3 02

DESCRIPTION OF CORNER EVIDENCE FOUND, AND ORIGINAL RECORD (If known)

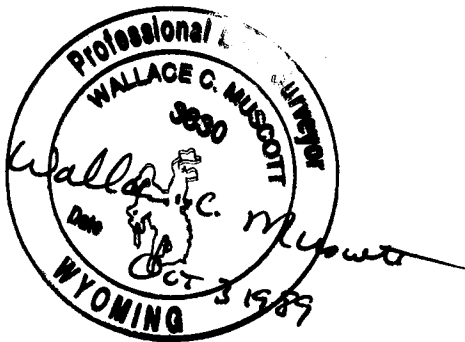
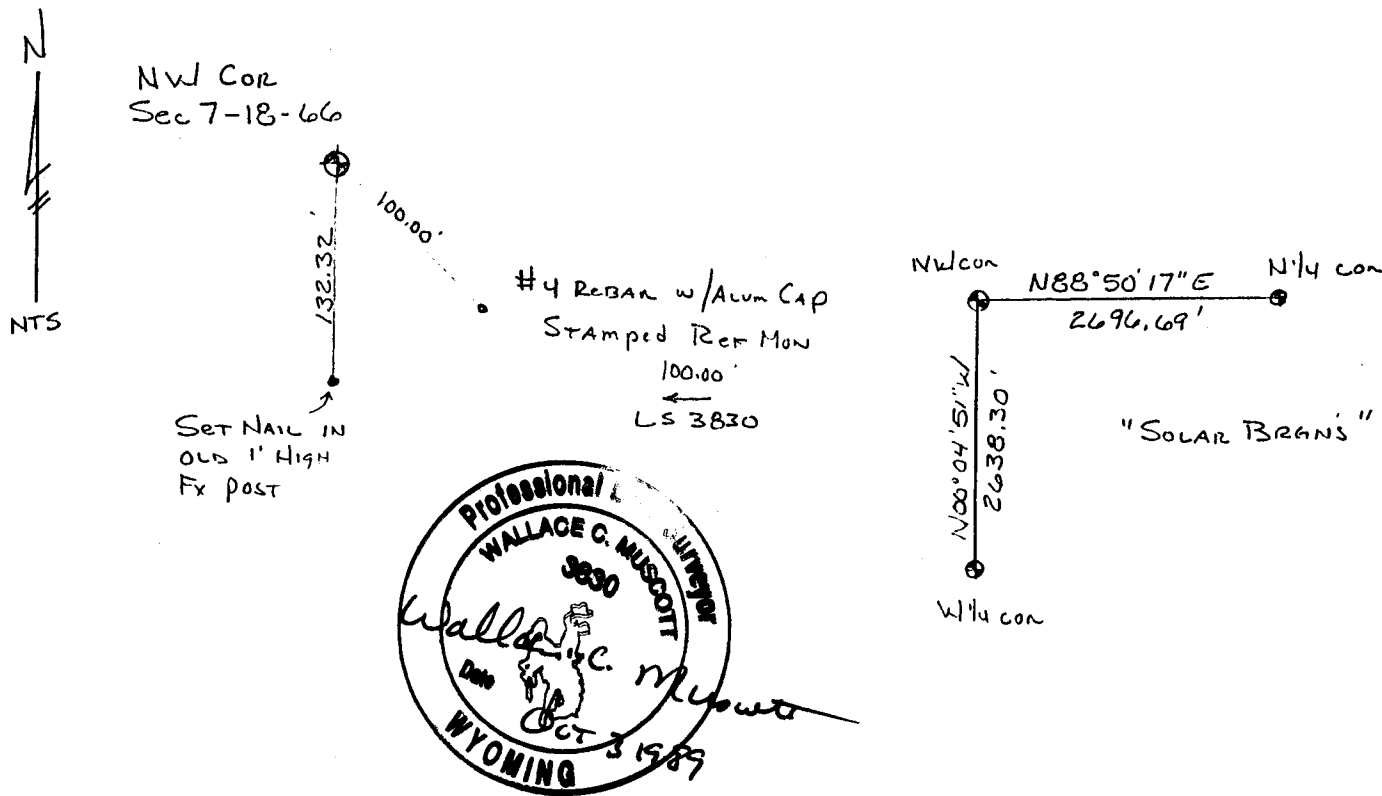
THIS IS AN UPDATE TO THE CORNER RECORDATION I PREVIOUSLY FILED ON THIS CORNER.

DESCRIPTION OF MONUMENT AND ACCESSORIES ESTABLISHED TO PERPETUATE THE ORIGINAL LOCATION OF THIS CORNER:

I REPLACED MY #4 REBAR AND CAP WITH A 30" LONG #5 REBAR WITH A CORPS OF ENGINEERS BRASS CAP, SET 04 ABOVE GROUND AND PLACED THE ORIGINAL STONE ALONG SIDE.

JULY 11, 1989

SKETCH, WITH COURSE AND DISTANCE TO ADJACENT CORNER IF DETERMINED IN THIS SURVEY. (May Sketch or Paste Reproduction on Reverse Side.)



I, Wallace C. Muscott certify that I have carefully performed or reviewed the work done on the diagrammed corner as reported on this recordation form and approve the same.

Wallace C. Muscott 3830
Signature of Surveyor Registration No.

STATE OF WYOMING,
Office of Clerk and Recorder,
County of _____

This "corner record" was filed for record on the _____ day of _____, 19____, was noted on the cross-index plat and is assigned page No. _____, in book No. _____.

County Official		
Cross Index No. <u>E-1</u>	T. <u>18N</u>	R. <u>66W 6th</u> Mer.
_____	T. _____	R. _____ Mer.
_____	T. _____	R. _____ Mer.
_____	T. _____	R. _____ Mer.
_____	T. _____	R. _____ Mer.
_____	T. _____	R. _____ Mer.
_____	T. _____	R. _____ Mer.